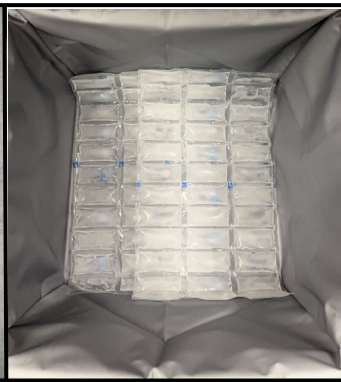


Cooling Elements

To maintain proper cold temperature limits under the recommended 41° F, frozen ice packs are used. Ice packs can be ordered using the CMS number (4205).

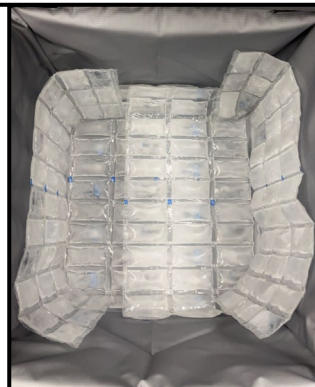
- Six (6) frozen ice packs used per insulated bag.
- No more than 24 cold meal bags per insulated bag
- Refer to “RAP Program Guidelines” and “Best Practices for Hot/Cold Packaged Meals”



Ice packs should be frozen daily. Place two frozen ice packs at the bottom of the insulated bag, covering the entire bottom of the BIC bag.

Place frozen ice packs on the left and right side of the bag.

- Do NOT exceed more than 24 cold bag meals per insulated bag.



Once insulated bag is packed, place two frozen ice packs directly on top the menu items packed. Place open insulated bag in refrigeration until time to transport. Do not close insulated bag until removed from refrigeration unit, as closing insulated bags prior to removal from refrigeration unit will result in poor circulation of chilled air inside the closed insulated bag.